



“EDGE futur fuses the precision of a leadership cockpit with the soul of contemporary art.
Every curve, every finish embodies vision, strength, and beauty.





EDGE FUTUR
2025 ROOM
3 X 4K TV 65"

zoom



poly



soniva
INTEGRATED SOLUTIONS



450 Installations Worldwide

Design for reliability, aesthetics and
IT managers.

Executives and the AV team will be thankful!

Protect your leadership team!

- 3 seater
 - Furniture
 - Carbon fiber
 - Corian
- 4 seater
 - Furniture
 - Carbon fiber
 - Corian
- 7 seater
 - Furniture
 - Carbon fiber
 - Corian
- 12-20 seater
 - Furniture
 - Carbon fiber
 - Corian



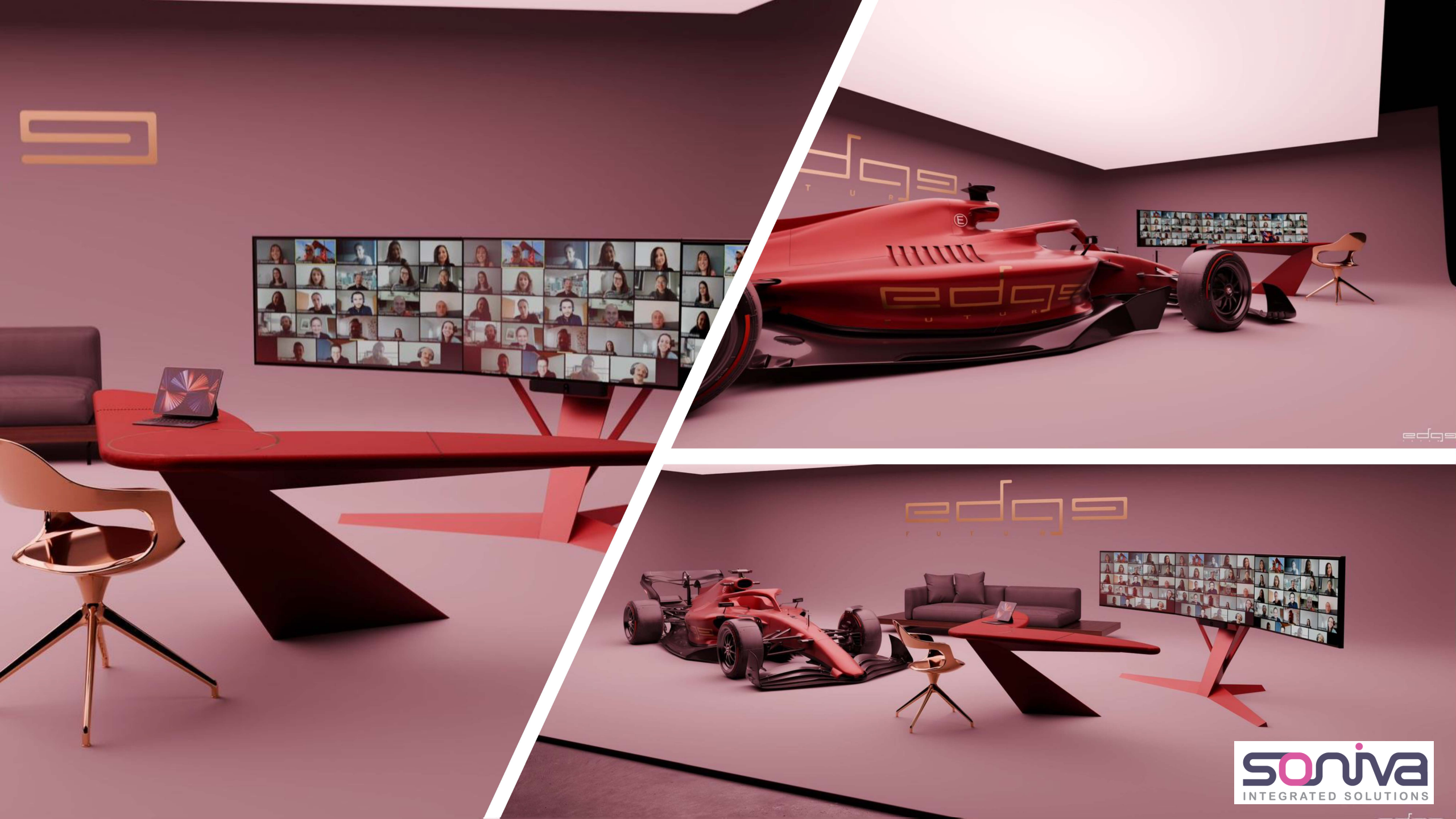
**We developed cutting-edge solutions for
executives, StudioEBX, WarRoom, and
Recording Studio.**


3-5-7-14-18 seater



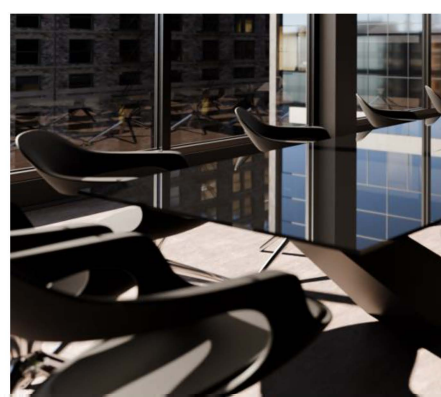


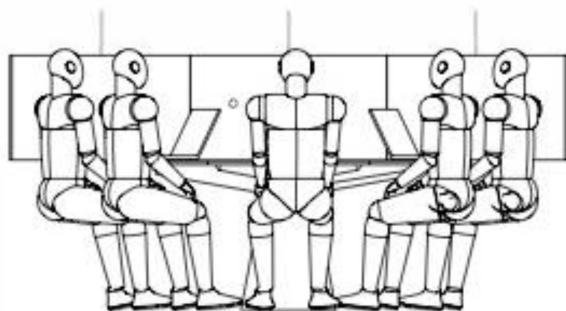
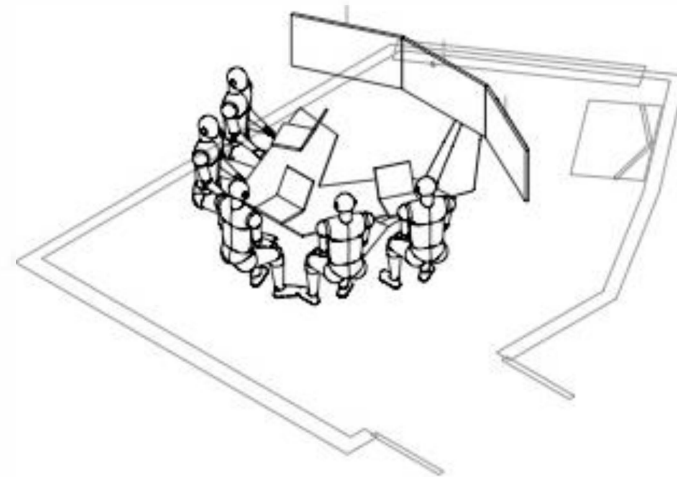
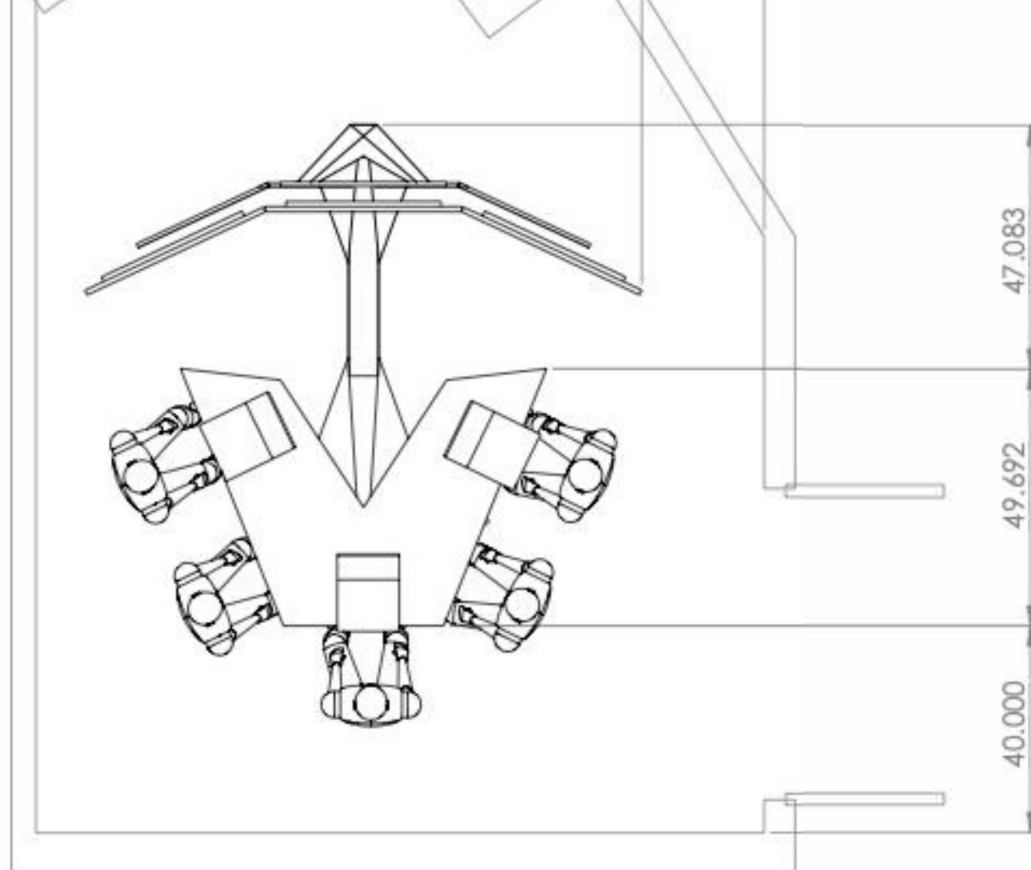






But what truly sets
EDGE apart is the
emotion: the instant
you enter, you feel
the presence of
leadership.





INCH

UNLESS OTHERWISE SPECIFIED:
DIMENSIONS ARE IN MILLIMETERS
SURFACE FINISH:
TOLERANCES:
LINEAR:
ANGULAR:

70424

DEBUR AND
BREAK SHARP
EDGES

CLIENT

DRAIN

DATE _____

2/21/2025

MATERIAL

DO NOT SCALE DRAWING

REVISION



soniva
INTEGRATED SOLUTIONS

THE

EWG NO.

huddle7-croesus 5 place

A3

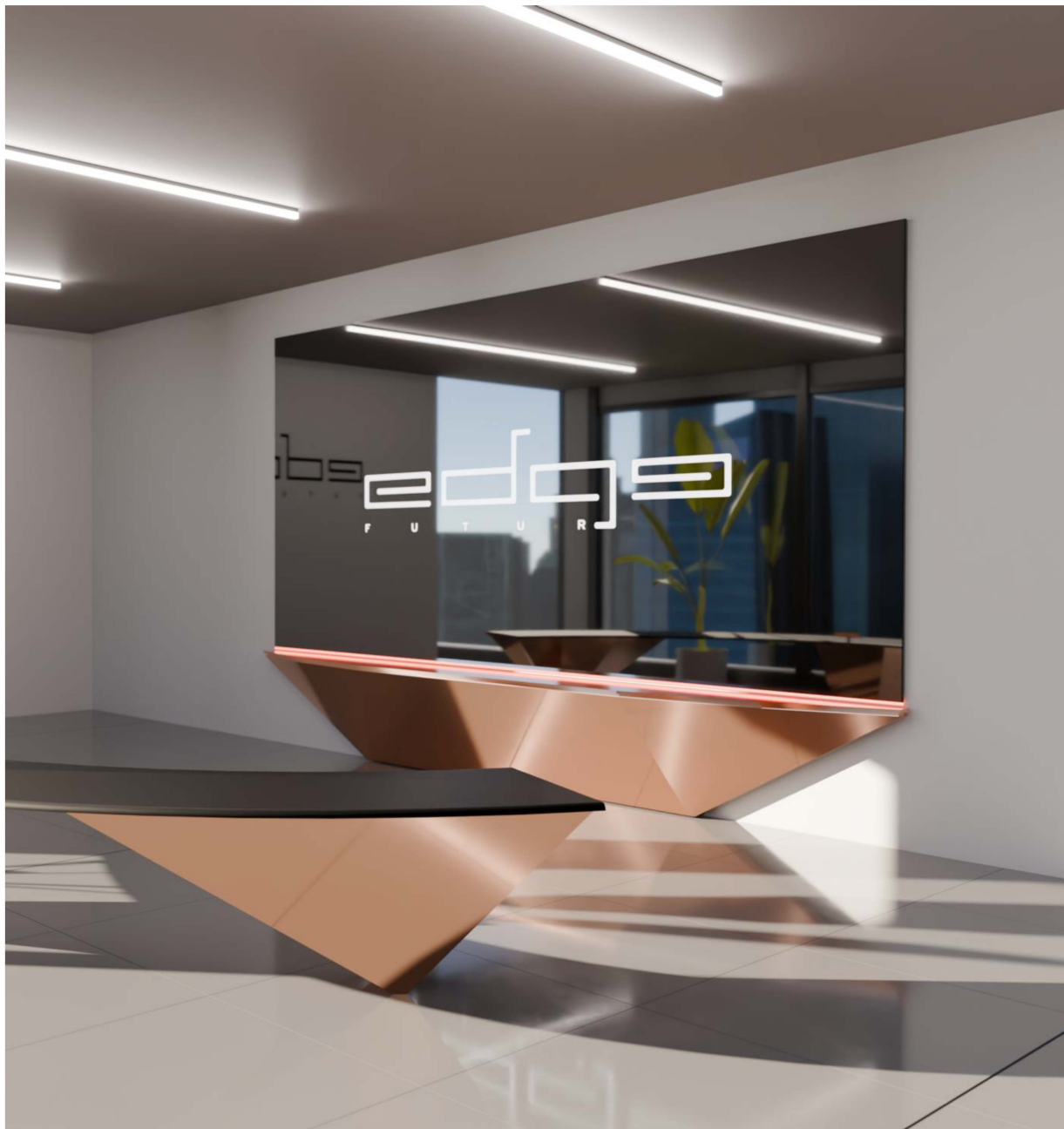














New Boardrooms




It's game on!

Designed for hybrid work



Designed for the Yankees of NYC





**We are passionate about
creating emotions that change
the way technology is
perceived.”**
SONIVA TEAM

**Showrooms:
Milan Paris NYC Montreal**

Email: info@soniva.ca
Cell: 514-830-6532

